

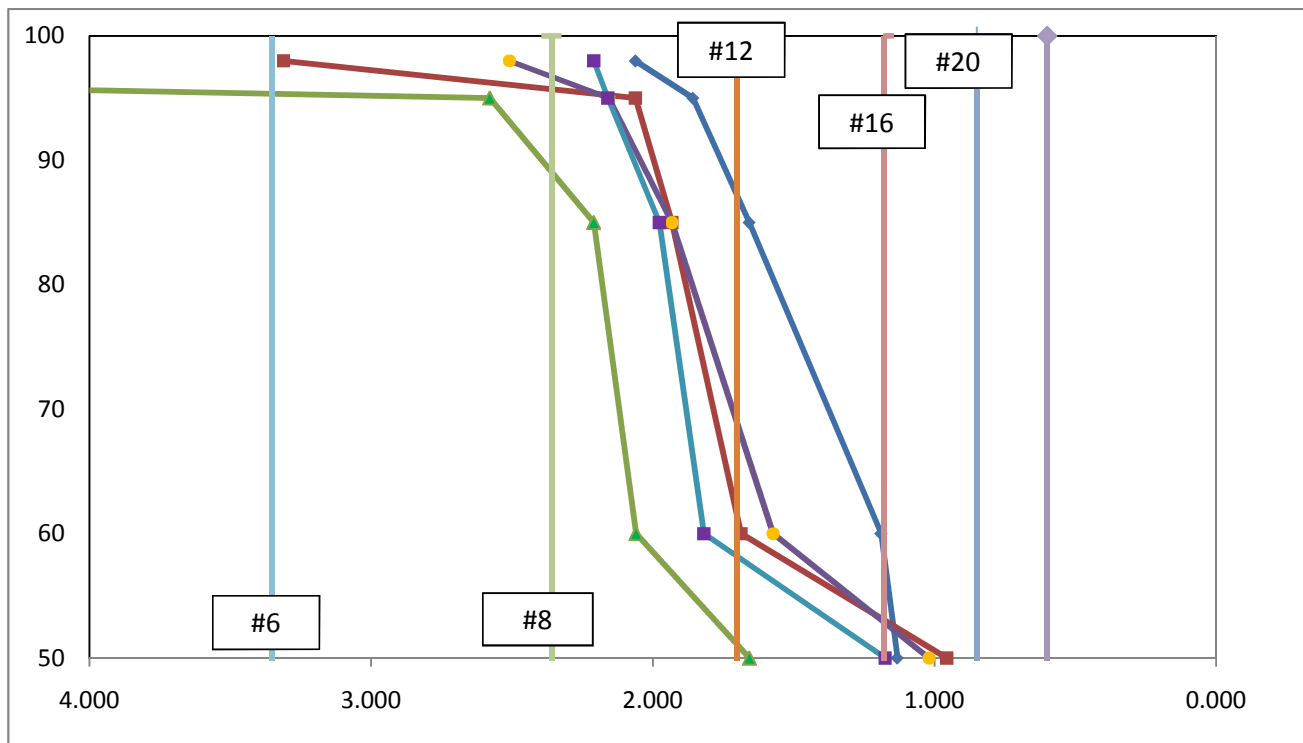
## GEOTEXTILE TEST RESULTS

### Pore Size Distribution

Client: SOX Erosion Solutions  
 Project: Pore Size Distribution  
 Material: SOX Erosion Control Blanket  
 I.D.: GREEN

Project No.: 46382  
 Test Method: ASTM D 6767  
 Pore Fluid: Mineral Oil  
 Surface Tension, Dynes/cm: **32**  
 Capillary Factor: **0.82**

| Percent Passing | OPENING SIZE, mm |       |       |       |       | AVE          | C.V. |
|-----------------|------------------|-------|-------|-------|-------|--------------|------|
|                 | 1                | 2     | 3     | 4     | 5     |              |      |
| 98              | 2.062            | 3.311 | 9.288 | 2.510 | 2.210 | 3.876        | 79%  |
| 95              | 1.858            | 2.062 | 2.579 | 2.156 | 2.160 | <b>2.163</b> | 12%  |
| 85              | 1.658            | 1.933 | 2.210 | 1.933 | 1.977 | 1.942        | 10%  |
| 60              | 1.190            | 1.687 | 2.060 | 1.574 | 1.819 | 1.666        | 19%  |
| 50              | 1.132            | 0.957 | 1.658 | 1.020 | 1.175 | 1.188        | 23%  |



Test Performed by: K. Wise  
 Reviewed by: R. Lacey

Date: 5/15/2019  
 Date: 5/20/2019

## GEOTEXTILE TEST RESULTS

### Apparent Opening Size & Permittivity by Capillary Porometer

Client: SOX Erosion Solutions  
 Project: Pore Size Distribution  
 Material: SOX Erosion Control Blanket  
 I.D.: GREEN

Project No.: 46382  
 Test Method: ASTM D 6767  
 Pore Fluid: Mineral Oil  
 Surface Tension, Dynes/cm: 32  
 #REF! #REF!

Capillary Factor: 0.82

| Apparent Opening Size, Des. Sieve No. |   |   |   |   |     |
|---------------------------------------|---|---|---|---|-----|
| 1                                     | 2 | 3 | 4 | 5 | AVE |
| 0                                     | 0 | 0 | 0 | 0 | 0   |

| Thickness, mils |     |     |     |      |     |      |
|-----------------|-----|-----|-----|------|-----|------|
| 1/6             | 2/7 | 3/8 | 4/9 | 5/10 | AVE | C.V. |
| 50              | 49  | 50  | 49  | 48   | 49  | 0    |
| 49              | 48  | 49  | 48  | 47   |     |      |

| Permittivity, sec-1 |      |      |      |      |      |      |
|---------------------|------|------|------|------|------|------|
| 1/6                 | 2/7  | 3/8  | 4/9  | 5/10 | AVE  | C.V. |
| 3.04                | 2.48 | 2.80 | 2.68 | 2.83 | 2.79 | 5%   |
| 2.84                | 2.80 | 2.79 | 2.77 | 2.83 |      |      |

| Permeability, cm/s |      |      |      |      |      |      |
|--------------------|------|------|------|------|------|------|
| 1/6                | 2/7  | 3/8  | 4/9  | 5/10 | AVE  | C.V. |
| 0.39               | 0.31 | 0.36 | 0.33 | 0.35 | 0.34 | 6%   |
| 0.35               | 0.34 | 0.35 | 0.34 | 0.34 |      |      |

| Permittivity, GPM/ft <sup>2</sup> |     |     |     |      |     |      |
|-----------------------------------|-----|-----|-----|------|-----|------|
| 1/6                               | 2/7 | 3/8 | 4/9 | 5/10 | AVE | C.V. |
| 227                               | 185 | 210 | 200 | 212  | 208 | 5%   |
| 212                               | 210 | 208 | 207 | 212  |     |      |

| Estimated Maximum Percent Open Area, % |      |      |      |      |      |      |
|--|------|------|------|------|------|------|
| 1                                      | 2    | 3    | 4    | 5    | AVE  | C.V. |
| 16.6                                   | 13.6 | 15.9 | 14.8 | 15.8 | 15.6 | 5%   |
| 16.0                                   | 16.0 | 15.7 | 16.0 | 15.8 |      |      |

| D737 Air Flow, ft3/min/ft2 |     |     |     |     |     |      |
|----------------------------|-----|-----|-----|-----|-----|------|
| 1                          | 2   | 3   | 4   | 5   | AVE | C.V. |
| 429                        | 351 | 396 | 379 | 400 | 394 | 5%   |



# TESTING, RESEARCH, CONSULTING AND FIELD SERVICES

Austin, TX - USA | CA - USA | SC - USA | Gold Coast - Australia | Suzhou - China | Sao Paulo, Brazil | Johannesburg - Africa

|     |     |     |     |     |
|-----|-----|-----|-----|-----|
| 401 | 396 | 393 | 391 | 400 |
|-----|-----|-----|-----|-----|

Test Performed by: K. Wise  
Reviewed by: R. Lacey

Date: 5/15/2019  
Date: 5/20/2019